

ECONOMIC INDICATORS

NEW
SOUTH
WALES

EMBARGO: 11:30AM (CANBERRA TIME) WED 14 JAN 1998

CONTENTS

	<i>page</i>
Notes	2
NSW overview	3
Main features	4
List of tables and graphs	5
 Population	 6
Labour	7
Production	10
Building	11
Retail trade	12
New motor vehicle registrations	13
Tourism	14
Consumer and producer price indexes	15
Finance	16
State Government finance	17
Investment	18
Foreign trade	19

INQUIRIES

- For further information about these and related statistics, contact Bill Markham on Sydney (02) 9268 4376 or e-mail at bill.markham@abs.gov.au or contact any ABS office.

NOTES

GENERAL

This publication has been enhanced to incorporate relevant data from the now discontinued publication *Monthly Summary of Statistics, NSW* (Cat. no. 1305.1) (final edition December 1997).

This enhanced publication provides information on a wide range of economic indicators which are the latest available at the time of publication. In a number of cases, figures appearing in this summary are preliminary and are subject to revision in subsequent issues.

SEASONAL ADJUSTMENT AND TREND ESTIMATION

Seasonal adjustment is a means of removing the estimated effects of normal seasonal variation from a series so that the effects of other variations on that series can be more clearly recognised. Seasonal adjustment does not aim to remove the irregular or non-seasonal influences which may be present. This means that movements of seasonally adjusted estimates may not be reliable indicators of trend behaviour. Smoothing seasonally adjusted series produces a measure of the underlying trend by reducing the impact of the irregular component of the series. This smoothing technique does result in revisions to the most recent estimates as additional observations become available. For an explanation of seasonal adjustment derivation, refer to the publication *Seasonally Adjusted Indicators* (Cat. no. 1308.0).

STANDARD ERRORS OF ESTIMATES

One measure of the variability which occurs as a result of surveying only samples of the total business population is the standard error. There are about two chances in three that a survey estimate is within one standard error of the figure that would have been obtained if all businesses had been included, and about 19 chances in 20 that it is within two standard errors. The standard error can also be expressed as a percentage of the estimate and this is known as the relative standard error (RSE).

For detailed explanatory notes and definitions for the items shown in this publication, readers are referred to the specific ABS publications.

Current publications produced by the ABS are listed in the *Catalogue of Publications* (Cat. no. 1101.0). A *Release Advice* (Cat. no. 1105.0) is issued on Tuesdays and Fridays which lists publications to be released in the next few days. These publications are available from any ABS office.

SYMBOLS AND OTHER USAGES

kWh	kilowatt hour
teraJ	terajoule
n.a.	not available
n.p.	not available for publication but included in totals where applicable
n.y.a	not yet available
r	figure or series revised since previous issue
..	not applicable
—	nil or rounded to zero
—	break in continuity of series (where a line is drawn across a column between two consecutive figures)

Gregory W. Bray
Regional Director
New South Wales

NSW OVERVIEW

.....

EMPLOYMENT

Employment rose by 2.1% in NSW in November 1997 to a seasonally adjusted figure of 2,839,000. National employment rose by 0.8% over the same period.

UNEMPLOYMENT

Seasonally adjusted unemployment fell by 2.9% in November 1997 to 238,000. The unemployment rate in NSW was 7.7% in November 1997, down from 8.1% the previous month. The national unemployment rate was 8.4% in November 1997.

NEW MOTOR VEHICLE REGISTRATIONS

In seasonally adjusted terms, new motor vehicle registrations in NSW decreased by 2.6% from 21,890 in September 1997 to 21,321 in October 1997.

BUILDING APPROVALS

The seasonally adjusted number of new dwelling units approved in NSW in October 1997 was 4,111, an increase of 15.3% on the previous month and 8.7% higher than in October 1996.

TOURISM

In terms of demand, the number of room nights occupied in hotels, motels and guest houses in NSW during the September quarter 1997 fell by 0.3% compared with September quarter 1996. This compares with a 2.4% increase in room nights occupied Australia wide. The room occupancy rate in NSW fell by 1.6 percentage points to 57.5% compared to a 0.8 percentage point decrease to 58% for Australia.

FINANCE

The value of housing finance commitments for owner occupation in NSW in October 1997 was \$1,870 million. This represented a 0.7% decrease from September 1997 but a 19.3% increase on October 1996.

PRIVATE NEW CAPITAL EXPENDITURE

The September quarter 1997 trend estimates of private new capital expenditure in NSW on equipment, plant and machinery increased by 3.1% on the June quarter 1997, and increased by 1.8% on September quarter 1996. Expenditure on buildings and structures decreased by 6.8% on the June quarter 1997 and decreased 7.1% on the previous year's September quarter estimate.

MAIN FEATURES

.....

BUILDING APPROVALS

In October 1997, the seasonally adjusted figure for total dwelling units approved (4,111) increased 15.3% on the previous month and 8.7% on October 1996. Of the total, 2,420 were new houses approved. At the national level, the increases were 3.7% and 4.6% respectively over the same periods.

In seasonally adjusted terms, the value of new residential building approved for October 1997 was \$511.7 million, up 27.5 % on the previous month and 33.3% on October 1996. However, the figure for October was 19.2% down on the August 1997 figure of \$633.6 million, the highest since August 1994.

In original terms, the value of non-residential building approved in October 1997 was \$520.3 million, up 31.2% on the previous month, but down 30.6% on October 1996. The value of total building work approved for October was \$1,123.1 million, representing 40.5% of the national figure (\$2,767.5 million).

NEW MOTOR VEHICLE REGISTRATIONS

In October 1997, the seasonally adjusted figure for total new motor vehicle registrations was 21,321, a decrease of 2.6% on the previous month's figure. Passenger vehicles (18,747) and other vehicle registrations (2,574) declined by 2.0% and 7.0% respectively over the same period.

For the seasonally adjusted movement since October 1996, total new motor vehicle registrations and passenger vehicles increased 18.3% and 21.5% respectively. There was a decrease of 0.7% in other vehicles over the same period.

Nationally, the seasonally adjusted figure for total new motor vehicle registrations in October 1997 was 62,766, a fall of 0.4% on the previous month. Passenger vehicles (53,818) increased by 0.2% while other vehicles (8,948) fell by 3.8% over the same period. Compared to October 1996, all categories increased with passenger vehicles showing the most significant movement (up 24.3%).

In seasonally adjusted terms, the October 1997 figures showed the NSW contribution to national figures as follows: 34.0% for total new motor vehicle registrations; 35% for passenger vehicles; and 28.8% for other vehicles.

LIST OF TABLES AND GRAPHS

Page

POPULATION

- 1** Estimated resident population, NSW 6

LABOUR

- 2** Labour data, latest time period, NSW and Australia 7
3 Labour data, time series, NSW 7
4 Labour force status of the civilian population, NSW 8
5 Graph: Unemployment rates, NSW and Australia 9

PRODUCTION

- 6** Coal, electricity and gas production, latest time period, NSW and Australia .. 10
7 Coal, electricity and gas production, time series, NSW 10

BUILDING

- 8** Building approvals, latest time period, NSW and Australia 11
9 Building approvals, time series, NSW 11

RETAIL TRADE

- 10** Turnover of retail establishments, latest time period, NSW and Australia 12
11 Turnover of retail establishments, time series, NSW 12

NEW MOTOR VEHICLE REGISTRATIONS

- 12** New motor vehicle registrations, latest time period, NSW and Australia 13
13 New motor vehicle registrations, time series, NSW 13

TOURISM

- 14** Licensed hotels, motels etc., latest time period, NSW and Australia 14
15 Licensed hotels, motels etc., time series, Sydney and NSW 14
16 Graph: Licensed hotels, motels etc., quarterly room nights occupied,
 Sydney and Balance of NSW 14

CONSUMER AND PRODUCER PRICE INDEXES

- 17** Consumer and producer price indexes, latest time period,
 NSW and Australia 15
18 Consumer and producer price indexes, time series, NSW 15
19 Graph: Consumer Price Index, Sydney and average of 8 capital cities 15

HOUSING FINANCE

- 20** Finance commitments, latest time period, NSW and Australia 16
21 Finance commitments, time series, NSW 16

STATE GOVERNMENT FINANCE

- 22** Government finance, budget sector, time series, NSW 17

INVESTMENT

- 23** Actual private new fixed capital expenditure, latest time period,
 NSW and Australia 18
24 Actual private new fixed capital expenditure, time series, NSW 18
25 Graph: Actual private new fixed capital expenditure, NSW 18

FOREIGN TRADE

- 26** Imports and exports, latest time period, NSW and Australia 19
27 Imports and exports, time series, NSW 19

1

ESTIMATED RESIDENT POPULATION, NSW

Period	Estimated resident population at end of period			Increase during period			Mean estimated resident population for year ended	
	Males	Females	Persons	Natural increase(a)	Net estimated migration	Total increase(b)	30 June	31 December
	'000	'000	'000	'000	'000	'000	'000	'000
1994	3 024.5	3 061.1	6 085.5	42.0	11.8	56.6	6 030.9	6 059.6
1995	3 061.7	3 102.1	6 163.8	43.0	33.9	78.2	6 088.4	6 122.9
1996	3 098.2	3 142.7	6 240.9	41.8	33.3	77.1	6 164.0	6 203.6
1995								
December qtr	3 061.7	3 102.1	6 163.8	10.7	9.2	21.0
1996								
March qtr	3 072.1	3 113.8	6 185.9	11.6	9.4	22.1
June qtr	3 080.7	3 123.2	6 203.9	10.3	6.8	18.0
September qtr	3 089.2	3 132.5	6 221.7	8.8	9.0	17.8
December qtr	3 098.2	3 142.7	6 240.9	11.1	8.1	19.2
1997								
March qtr	3 108.3	3 152.6	6 260.9	11.4	8.6	20.0

^a Excess of live births over deaths.

^b For dates prior to June 1996, differences between the total increase shown and the sum of the natural increase and net estimated migration arise from retrospective adjustments to population estimates (which are made after each Census) to compensate for any intercensal discrepancy. A description of intercensal discrepancy is contained in the ABS information paper Demographic Estimates: Concepts, Sources and Methods (Cat. no. 3228.0).

Source: Australian Demographic Statistics (Cat. no. 3101.0)

2

LABOUR, NSW AND AUSTRALIA

Indicator	Unit	Latest period	Latest figure	New South Wales		Australia		
				Change from prior period	Change from same period prior year	Latest figure	Change from prior period	Change from same period prior year
				%	%		%	%
Employed persons (seasonally adjusted)	'000	Nov 97	2 839.0	2.1	1.4	8 521.2	0.8	1.5
Unemployed persons (seasonally adjusted)	'000	Nov 97	238.5	-2.9	4.4	778.9	0.8	-0.1
Labour force (seasonally adjusted)	'000	Nov 97	3 077.5	1.7	1.6	9 300.1	0.8	1.4
Participation rate (seasonally adjusted)	%	Nov 97	62.0	1.5	0.4	63.5	0.7	0.0
Unemployment rate (seasonally adjusted)	%	Nov 97	7.7	-4.5	2.7	8.4	0.0	-1.4
Industrial disputes—working days lost	'000	Sep 97	23.0	4.1	144.7	51.9	59.7	46.6
Job vacancies	'000	Aug 97	19.3	-1.7	-23.4	69.3	19.2	9.1
Average weekly employee earnings—full-time adult ordinary time earnings (seasonally adjusted)	\$	Aug 97	732.4	1.5	2.5	708.7	1.9	4.4

Source: Labour Force, Australia, Preliminary (Cat. no. 6202.0), Job Vacancies and Overtime, Australia (Cat. no. 6354.0), Industrial Disputes, Australia (6321.0), Average Weekly Earnings, States and Australia (Cat. no. 6302.0)

3

LABOUR, NSW

Period	Seasonally Adjusted						Job vacancies
	Employed persons	Unemployed persons	Labour force	Participation rate	Unemployment rate	Industrial disputes (working days lost)	
	'000	'000	'000	%	%	'000	'000
1996							
September	2 792.1	245.0	3 037.1	62.2	8.1	9.4	..
October	2 811.8	242.0	3 053.8	62.4	7.9	7.0	..
November	2 799.3	228.4	3 027.7	61.8	7.5	22.0	25.6
December	2 820.8	238.3	3 059.1	62.4	7.8	12.2	..
1997							
January	2 831.7	238.5	3 070.3	62.6	7.8	3.2	..
February	2 801.9	258.8	3 060.7	62.3	8.5	3.2	22.9
March	2 813.4	240.8	3 054.2	62.1	7.9	16.3	..
April	2 826.2	248.2	3 074.5	62.5	8.1	2.6	..
May	2 799.0	254.3	3 053.3	62.0	8.3	13.2	19.6
June	2 788.1	229.7	3 017.8	61.2	7.6	10.8	..
July	2 804.2	255.7	3 060.0	62.0	8.4	18.5	..
August	2 767.9	241.2	3 009.1	60.9	8.0	22.1	19.3
September	2 817.4	239.3	3 056.7	61.8	7.8	23.0	..
October	2 781.8	245.6	3 027.4	61.1	8.1	n.y.a.	..
November	2 839.0	238.5	3 077.5	62.0	7.7	n.y.a.	n.y.a.

Source: Labour Force, Australia, Preliminary (Cat. no. 6202.0), Industrial Disputes, Australia (Cat. no. 6321.0)

Month	Employed		Unemployed		Labour force	Not in labour force	Civilian population aged 15 years and over	Unemployment rate(a)	Participation rate(b)
	Full-time workers	Total	Looking for full-time work	Total					
	'000	'000	'000	'000	'000	'000	'000	%	%
MALES									
November									
1993	1 337.6	1 486.4	165.5	176.7	1 663.1	652.6	2 315.7	10.6	71.8
1994	1 369.3	1 534.2	129.0	143.6	1 677.8	661.3	2 339.1	8.6	71.7
1995	1 408.5	1 591.4	121.2	134.5	1 725.9	642.7	2 368.7	7.8	72.9
1996									
September	1 425.9	1 605.9	125.6	145.1	1 751.0	648.1	2 399.1	8.3	73.0
October	1 422.4	1 604.1	116.4	134.9	1 738.9	662.9	2 401.8	7.8	72.4
November	1 416.6	1 589.1	117.7	134.0	1 723.1	681.4	2 404.6	7.8	71.7
December	1 451.3	1 625.7	121.3	142.1	1 767.8	639.5	2 407.3	8.0	73.4
1997									
January	1 437.6	1 605.6	133.2	151.6	1 757.3	651.9	2 409.2	8.6	72.9
February	1 419.3	1 588.4	142.7	161.6	1 750.0	661.1	2 411.1	9.2	72.6
March	1 434.1	1 603.9	126.3	147.2	1 751.1	661.9	2 413.0	8.4	72.6
April	1 421.2	1 610.1	120.9	139.1	1 749.3	666.3	2 415.6	8.0	72.4
May	1 408.0	1 597.3	127.6	143.3	1 740.7	677.4	2 418.1	8.2	72.0
June	1 416.4	1 598.9	116.8	129.1	1 728.1	692.7	2 420.7	7.5	71.4
July	1 422.3	1 600.4	130.3	145.4	1 745.8	677.8	2 423.6	8.3	72.0
August	1 390.3	1 567.6	120.3	135.2	1 702.8	723.7	2 426.5	7.9	70.2
September	1 434.3	1 613.3	126.1	147.6	1 760.9	668.5	2 429.3	8.4	72.5
October	1 428.1	1 595.3	121.3	138.9	1 734.2	698.1	2 432.3	8.0	71.3
November	1 431.3	1 615.2	119.0	138.1	1 753.3	681.9	2 435.2	7.9	72.0
FEMALES									
November									
1993	682.9	1 122.2	80.0	114.4	1 236.6	1 162.0	2 398.6	9.2	51.6
1994	695.0	1 150.7	66.7	98.5	1 249.2	1 175.1	2 424.3	7.9	51.5
1995	735.0	1 220.3	65.0	94.0	1 314.3	1 137.6	2 451.9	7.2	53.6
1996									
September	722.0	1 208.4	66.6	104.0	1 312.4	1 173.8	2 486.2	7.9	52.8
October	736.5	1 215.1	63.2	98.1	1 313.3	1 176.2	2 489.4	7.5	52.8
November	730.9	1 214.6	50.2	82.2	1 296.8	1 195.9	2 492.6	6.3	52.0
December	746.7	1 225.0	70.1	102.6	1 327.6	1 168.3	2 495.8	7.7	53.2
1997									
January	729.7	1 182.3	75.0	106.4	1 288.6	1 209.5	2 498.1	8.3	51.6
February	725.7	1 194.1	80.0	125.6	1 319.8	1 180.6	2 500.3	9.5	52.8
March	722.6	1 212.4	73.1	110.0	1 322.4	1 180.2	2 502.5	8.3	52.8
April	730.2	1 211.6	68.9	104.5	1 316.1	1 189.1	2 505.3	7.9	52.5
May	720.4	1 206.6	67.2	101.9	1 308.5	1 199.5	2 508.0	7.8	52.2
June	704.3	1 192.4	64.1	92.3	1 284.7	1 226.0	2 510.7	7.2	51.2
July	729.6	1 213.2	61.7	92.7	1 305.9	1 207.7	2 513.6	7.1	52.0
August	703.9	1 182.9	65.3	92.7	1 275.6	1 240.8	2 516.5	7.3	50.7
September	722.2	1 226.8	63.4	96.1	1 322.9	1 196.5	2 519.4	7.3	52.5
October	721.0	1 194.1	68.1	97.3	1 291.5	1 230.6	2 522.1	7.5	51.2
November	725.5	1 228.3	62.1	87.8	1 316.1	1 208.6	2 524.7	6.7	52.1

For footnotes see end of table.

4

LABOUR FORCE STATUS, NSW — ORIGINAL *continued*

Month	Employed		Unemployed		Labour force	Not in labour force	Civilian population aged 15 years and over	Unemployment rate(a)	Participation rate(b)
	Full-time workers	Total	Looking for full-time work	Total					
	'000	'000	'000	'000	'000	'000	'000	%	%
PERSONS									
November									
1993	2 020.4	2 608.7	245.6	291.1	2 899.8	1 814.6	4 714.4	10.0	61.5
1994	2 064.2	2 684.9	195.7	242.0	2 926.9	1 836.4	4 763.4	8.3	61.4
1995	2 143.5	2 811.6	186.2	228.6	3 040.2	1 780.4	4 820.6	7.5	63.1
1996									
September	2 147.9	2 814.3	192.1	249.2	3 063.4	1 821.9	4 885.3	8.1	62.7
October	2 158.9	2 819.2	179.6	233.0	3 052.2	1 839.1	4 891.3	7.6	62.4
November	2 147.5	2 803.7	167.9	216.2	3 019.9	1 877.3	4 897.2	7.2	61.7
December	2 197.9	2 850.6	191.4	244.7	3 095.4	1 807.8	4 903.1	7.9	63.1
1997									
January	2 167.3	2 787.9	208.1	258.0	3 045.9	1 861.4	4 907.3	8.5	62.1
February	2 145.0	2 782.5	222.7	287.2	3 069.7	1 841.7	4 911.4	9.4	62.5
March	2 156.7	2 816.3	199.4	257.1	3 073.4	1 842.1	4 915.5	8.4	62.5
April	2 151.5	2 821.7	189.8	243.6	3 065.4	1 855.5	4 920.8	7.9	62.3
May	2 128.4	2 804.0	194.9	245.3	3 049.2	1 876.9	4 926.1	8.0	61.9
June	2 120.8	2 791.3	181.0	221.4	3 012.8	1 918.7	4 931.4	7.3	61.1
July	2 151.9	2 813.6	192.1	238.1	3 051.7	1 885.5	4 937.2	7.8	61.8
August	2 094.3	2 750.5	185.6	228.0	2 978.4	1 964.5	4 942.9	7.7	60.3
September	2 156.5	2 840.0	189.5	243.7	3 083.8	1 865.0	4 948.7	7.9	62.3
October	2 149.1	2 789.4	189.3	236.2	3 025.7	1 928.7	4 954.3	7.8	61.1
November	2 156.7	2 843.5	181.1	225.9	3 069.4	1 890.5	4 959.9	7.4	61.9

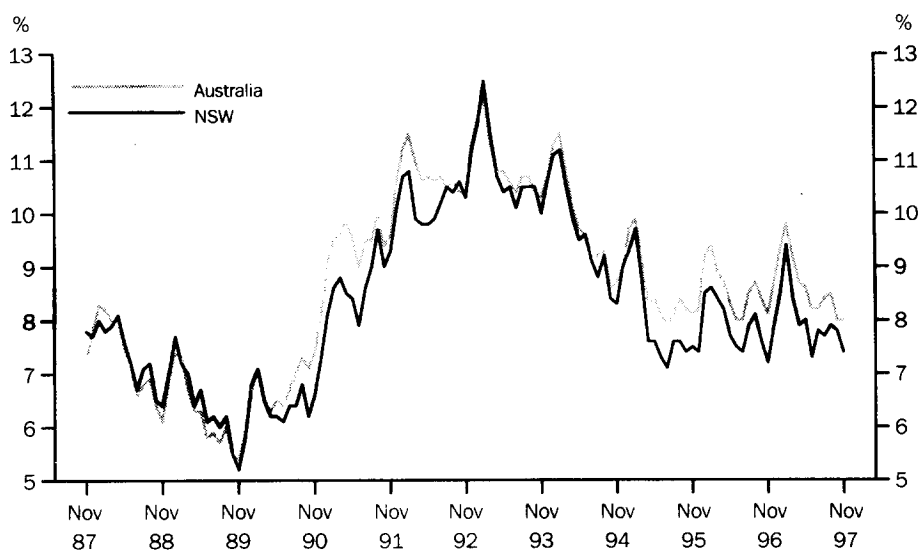
^a The number of unemployed in each group expressed as a percentage of the labour force in the same group.

^b The labour force in each group expressed as a percentage of the civilian population aged 15 and over in the same group.

Source: Labour Force, Australia, Preliminary (Cat. no. 6202.0)

5

UNEMPLOYMENT RATE — ORIGINAL



Source: Labour Force, Australia, Preliminary (Cat. no. 6202.0).

6

COAL, ELECTRICITY AND GAS PRODUCTION, NSW AND AUSTRALIA — ORIGINAL

Indicator	Unit	Latest period	Latest figure	New South Wales		Latest figure	Australia	
				Change from prior period	Change from same period prior year		Change from prior period	Change from same period prior year
				%	%		%	%
Raw coal won—								
Underground	'000 tonnes	Oct 97	4 179	-14.7	-24.5	n.a.	n.a.	n.a.
Open cut	'000 tonnes	Oct 97	6 436	12.0	-2.0	n.a.	n.a.	n.a.
Total	'000 tonnes	Oct 97	10 615	-0.3	-12.3	n.a.	n.a.	n.a.
Electricity	mill. kWh	Sep qtr 97	16 622	4.1	-0.1	45 521	6.1	4.1
Gas(a)	teraJ	Sep qtr 97	34 086	14.0	5.7	183 329	7.1	-0.2

^a Available for issue through mains. Includes ACT.

Source: Joint Coal Board, Manufacturing Production, Australia (Cat. no. 8301.0)

7

COAL, ELECTRICITY AND GAS PRODUCTION, NSW — ORIGINAL

Period	Raw coal won			Electricity mill. kWh	Gas(a) teraJ
	Underground	Open cut	Total		
	'000 tonnes	'000 tonnes	'000 tonnes		
1994-95	48 702	59 079	107 781	60 016	104 881
1995-96	54 314	58 775	113 089	62 047	104 141
1996-97	54 642	69 037	123 679	62 788	109 284
1996					
August	4 486	5 284	9 770	n.a.	n.a.
September	4 872	5 154	10 026	n.a.	n.a.
October	5 534	6 569	12 103	} 15 052	24 402
November	4 524	5 200	9 724		
December	3 859	4 830	8 689		
1997					
January	3 972	5 797	9 769	} 15 127	22 738
February	3 830	5 583	9 413		
March	4 088	5 663	9 751		
April	4 803	6 626	11 429	} 15 973	29 907
May	5 183	6 626	11 809		
June	4 717	5 785	10 502		
July	6 489	6 970	13 459	} 16 622	34 086
August	5 439	6 075	11 514		
September	4 898	5 745	10 643		
October	4 179	6 436	10 615	n.a.	n.a.

^a Available for issue through mains. Includes ACT.

Source: Joint Coal Board, Manufacturing Production, Australia (Cat. no. 8301.0)

Indicator	Unit	Latest period	Latest figure	New South Wales		Australia		
				Change from prior period	Change from same period prior year	Latest figure	Change from prior period	Change from same period prior year
				%	%		%	%
Number of dwelling units(a) (seasonally adjusted)—								
New houses	No.	Oct 97	2 420	12.7	24.9	8 525	2.8	18.9
Total	No.	Oct 97	4 111	15.3	8.7	12 153	3.7	4.6
Value of new residential building (seasonally adjusted)	\$m	Oct 97	511.7	27.5	33.3	1 301.2	7.7	19.2
Value of alterations and additions to residential building(b) (seasonally adjusted)	\$m	Oct 97	102.3	10.8	16.6	232.1	9.0	16.6
Value of non-residential building(c) (original)	\$m	Oct 97	520.3	31.2	-30.6	1 176.7	13.6	-15.1
Value of all building (original)	\$m	Oct 97	1 123.1	17.2	-8.9	2 767.5	5.2	-0.2

^a Includes dwelling units approved as part of the construction of non-residential building and alterations and additions to existing buildings (including conversions to dwelling units).

^b Valued at \$10,000 or more. Includes conversions of existing buildings into residential buildings.

^c Valued at \$50,000 or more.

Source: Building Approvals, Australia (Cat. no. 8731.0)

Period	Number of dwelling units(a), seasonally adjusted				Value of building approvals			
	New houses		Total		Seasonally adjusted		Original	
	Private sector	Total	Private sector	Total	New residential building	Alterations and additions to residential building(b)	Non-residential building(c)	All building
	no.	no.	no.	no.	\$m	\$m	\$m	\$m
1994-95	3 733.4	10 211.0
1995-96	3 650.2	9 168.6
1996-97	5 169.1	11 357.5
1996								
August	1 977	1 990	3 422	3 489	372.4	85.1	480.0	928.6
September	2 085	2 095	2 977	3 061	335.7	84.9	468.4	926.3
October	1 918	1 937	3 585	3 781	383.8	87.7	749.8	1 232.2
November	1 979	1 982	3 736	3 984	393.2	126.3	880.8	1 430.6
December	2 299	2 321	3 700	3 957	407.1	89.3	509.2	949.8
1997								
January	2 148	2 154	3 967	4 191	442.2	100.0	413.0	883.8
February	2 045	2 089	4 072	4 308	479.4	93.0	241.5	734.7
March	1 805	1 825	3 849	3 995	375.9	96.8	202.4	648.7
April	2 445	2 470	4 203	4 326	505.6	91.2	307.3	847.3
May	2 961	2 980	4 390	4 442	527.9	91.9	260.5	971.3
June	2 112	2 119	4 219	4 389	436.9	125.7	353.0	903.0
July	2 095	2 109	3 687	3 744	355.3	92.7	584.9	1 156.7
August	2 236	2 241	4 695	4 862	633.6	101.5	710.5	1 405.9
September	2 143	2 147	3 454	3 567	401.2	92.3	396.4	958.0
October	2 411	2 420	4 081	4 111	511.7	102.3	520.3	1 123.1

^a Includes dwelling units approved as part of the construction of non-residential building and alterations and additions to existing buildings (including conversions to dwelling units).

^b Valued at \$10,000 or more. Includes conversions of existing buildings into residential buildings.

^c Valued at \$50,000 or more.

Source: Building Approvals, Australia (Cat. no. 8731.0)

Indicator	Unit	Latest period	Latest figure	New South Wales		Latest figure	Australia	
				Change from prior period	Change from same period prior year		Change from prior period	Change from same period prior year
				%	%		%	%
Food retailing	\$m	Oct 97	1 516.8	-1.3	5.1	4 495.7	0.5	4.9
Department stores	\$m	Oct 97	336.6	-6.1	4.8	980.5	-6.5	5.3
Clothing and soft good retailing	\$m	Oct 97	272.7	-0.9	-2.6	722.4	1.4	1.1
Household good retailing	\$m	Oct 97	438.1	-5.7	-4.1	1 311.2	-0.6	2.6
Recreational good retailing	\$m	Oct 97	225.2	-1.9	6.1	653.3	-1.3	10
Other retailing	\$m	Oct 97	403.7	5.7	5.8	1 128.1	1.9	9.4
Hospitality and services	\$m	Oct 97	760.3	-0.6	2.4	1 858.0	0.5	4.6
Total value of retail sales	\$m	Oct 97	3 953.4	-1.5	3.0	11 149.4	-0.2	5.1

^a The figures shown are derived from a monthly survey of retail establishments. Excludes motor vehicle, boat and caravan dealers, service stations, smash repairers, tyre and battery retailers, bread and milk vendors, footwear repairers and electrical appliance repairers n.e.c. Retail establishments which do not have employees are excluded from the survey. Turnover includes retail sales, wholesale sales, takings from repairs, meals and hiring of goods; and commissions from agency activity (e.g. commissions received from collecting dry cleaning, selling lottery tickets etc.)

Source: Retail Trade, Australia (Cat. no. 8501.0).

Period	Food retailing	Department stores	Clothing and soft good retailing	Household good retailing	Recreational good retailing	Other retailing	Hospitality and services	Total
	\$m	\$m	\$m	\$m	\$m	\$m	\$m	\$m
1996								
August	1 439.4	338.1	286.1	464.3	216.8	381.0	761.9	3 887.6
September	1 441.0	324.7	284.3	456.3	217.0	368.6	747.8	3 839.7
October	1 442.7	321.2	279.9	456.9	212.2	381.4	742.2	3 836.4
November	1 455.3	337.5	277.8	441.3	215.0	374.8	731.6	3 833.3
December	1 437.5	339.6	288.1	452.2	224.4	376.7	743.4	3 861.8
1997								
January	1 450.0	334.7	285.5	439.8	220.1	371.2	735.1	3 836.4
February	1 458.0	342.2	277.9	474.6	219.2	374.2	739.9	3 885.9
March	1 487.8	329.5	267.4	445.2	214.8	378.0	732.7	3 855.4
April	1 455.1	314.7	271.6	440.6	219.6	378.3	727.8	3 807.8
May	1 481.5	327.9	283.2	452.9	221.2	384.7	741.0	3 892.4
June	1 464.5	314.2	274.8	455.6	223.7	389.0	765.4	3 887.2
July	1 512.4	364.6	279.9	479.1	214.1	400.8	748.4	3 999.2
August	1 505.0	328.0	276.3	477.3	211.4	385.4	763.9	3 947.3
September	1 537.5	358.4	275.1	464.8	229.6	382.0	765.1	4 012.4
October	1 516.8	336.6	272.7	438.1	225.2	403.7	760.3	3 953.4

^a The figures shown are derived from a monthly survey of retail establishments. Excludes motor vehicle, boat and caravan dealers, service stations, smash repairers, tyre and battery retailers, bread and milk vendors, footwear repairers and electrical appliance repairers n.e.c. Retail establishments which do not have employees are excluded from the survey. Turnover includes retail sales, wholesale sales, takings from repairs, meals and hiring of goods; and commissions from agency activity (e.g. commissions received from collecting dry cleaning, selling lottery tickets etc.)

Source: Retail Trade, Australia (Cat. no. 8501.0).

12

NEW MOTOR VEHICLE REGISTRATIONS(a), NSW AND AUSTRALIA — SEASONALLY ADJUSTED

Indicator	Unit	Latest period	Latest figure	New South Wales		Latest figure	Australia	
				Change from prior period	Change from same period prior year		Change from prior period	Change from same period prior year
				%	%		%	%
Passenger vehicles	no.	Oct 97	18 747	-2.0	21.5	53 818	0.2	24.3
Other vehicles (excluding motor cycles)	no.	Oct 97	2 574	-7.0	-0.7	8 948	-3.8	6.5
Total registrations (excluding motor cycles)	no.	Oct 97	21 321	-2.6	18.3	62 766	-0.4	21.4

^a Includes vehicles (other than those of the defence forces) owned by Government departments and authorities. Excludes mobile plant and equipment, tractors, trailers and non-motorised caravans.

Source: New Motor Vehicle Registrations, Australia, Preliminary (Cat. no. 9301.0).

13

NEW MOTOR VEHICLE REGISTRATIONS(a), NSW — SEASONALLY ADJUSTED

Period	Passenger vehicles	Other vehicles (excluding motor cycles)	Total (excluding motor cycles)
	no.	no.	no.
1996			
August	15 359	2 727	18 086
September	16 003	2 743	18 746
October	15 433	2 592	18 025
November	15 497	2 378	17 875
December	15 808	2 727	18 534
1997			
January	16 915	2 512	19 426
February	17 309	2 923	20 232
March	17 616	2 986	20 602
April	16 371	2 545	18 917
May	16 146	2 772	18 918
June	19 606	2 804	22 409
July	16 267	2 847	19 113
August	16 598	2 673	19 272
September	19 121	2 769	21 890
October	18 747	2 574	21 321

^a Includes vehicles (other than those of the defence forces) owned by Government departments and authorities. Excludes mobile plant and equipment, tractors, trailers and non-motorised caravans.

Source: New Motor Vehicle Registrations, Australia, Preliminary (Cat. no. 9301.0).

14

LICENSED HOTELS, MOTELS ETC., NSW AND AUSTRALIA — ORIGINAL

Indicator	Unit	Latest period	Latest figure	New South Wales		Latest figure	Australia	
				Change from prior period	Change from same period prior year		Change from prior period	Change from same period prior year
				%	%		%	%
Room nights	'000	Sept qtr	3 113.8	5.7	-0.3	9 521.2	9.4	2.4
Room occupancy rate	%	Sept qtr	57.5	2.7	-2.7	58.0	6.2	-1.4
Takings	\$'000	Sept qtr	325 246	6.4	3.5	949 679	11.3	5.9

Source: Tourist Accommodation, Australia (Cat. no. 8635.0)

15

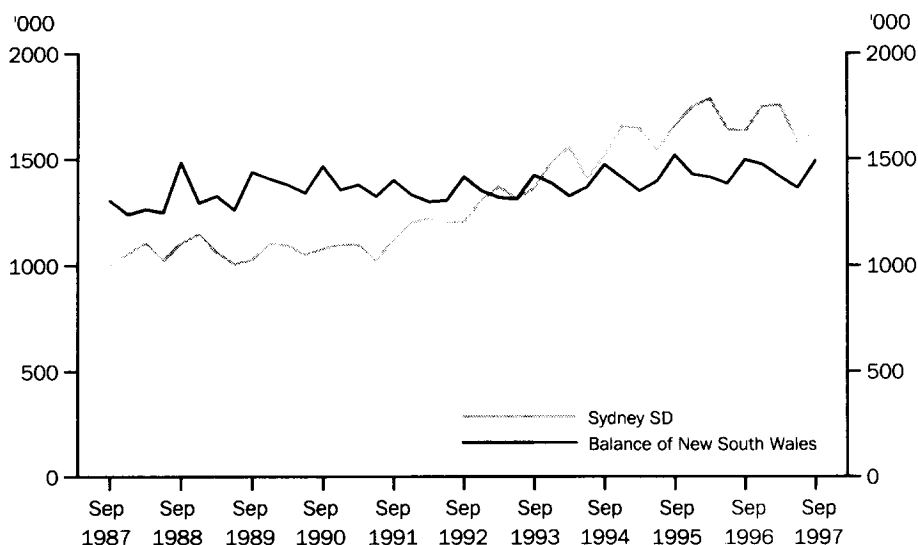
LICENSED HOTELS, MOTELS ETC., SYDNEY AND NSW — ORIGINAL

Period	Sydney			New South Wales		
	Room nights	Room occupancy rate	Takings	Room nights	Room occupancy rate	Takings
	'000	%	\$'000	'000	%	\$'000
1996						
March qtr	1 783.9	76.2	221 746	3 198.4	61.1	316 626
June qtr	1 640.4	69.5	205 884	3 024.3	57.4	296 797
September qtr	1 627.4	69.4	205 409	3 123.4	59.1	314 270
December qtr	1 747.3	74.7	232 355	3 221.7	60.9	333 494
1997						
March qtr	1 753.1	76.2	236 756	3 168.7	60.9	337 189
June qtr	1 581.0	67.9	214 116	2 945.2	56.0	305 726
Sept qtr	1 622.8	67.2	214 412	3 113.8	57.5	325 246

Source: Tourist Accommodation, NSW (Cat. no. 8635.1)

16

LICENSED HOTELS, MOTELS ETC., QUARTERLY ROOM NIGHTS OCCUPIED — ORIGINAL



Source: Tourist Accommodation, NSW (Cat. no. 8635.1)

17

CONSUMER AND PRODUCER PRICE INDEXES, NSW AND AUSTRALIA

Indicator	Unit	Latest period	Latest figure	New South Wales		Latest figure	Australia(a)	
				Change from prior period	Change from same period prior year		Change from prior period	Change from same period prior year
				%	%		%	%
Consumer Price Index (all groups)	1989-90 = 100.0	Sep qtr 97	119.8	-0.3	-0.3	119.7	-0.4	-0.3
Price index of materials used in house building (all groups)	1989-90 = 100.0	Sep qtr 97	117.8	0.4	1.6	117.3	0.3	1.5
Price index of materials used in building other than house building (all groups)	1989-90 = 100.0	Sep qtr 97	114.2	0.3	1.5	114.0	0.1	1.2

^a For the Consumer Price Index this is the weighted average of eight capital cities and for the other two indexes, the weighted average of the six State capital cities.

Source: Consumer Price Index (Cat. no. 6401.0), Price Index of Materials Used in Building Other Than House Building, Six State Capital Cities (Cat. no. 6407.0), Price Index of Materials Used in House Building, Six State Capital Cities (Cat. no. 6408.0)

18

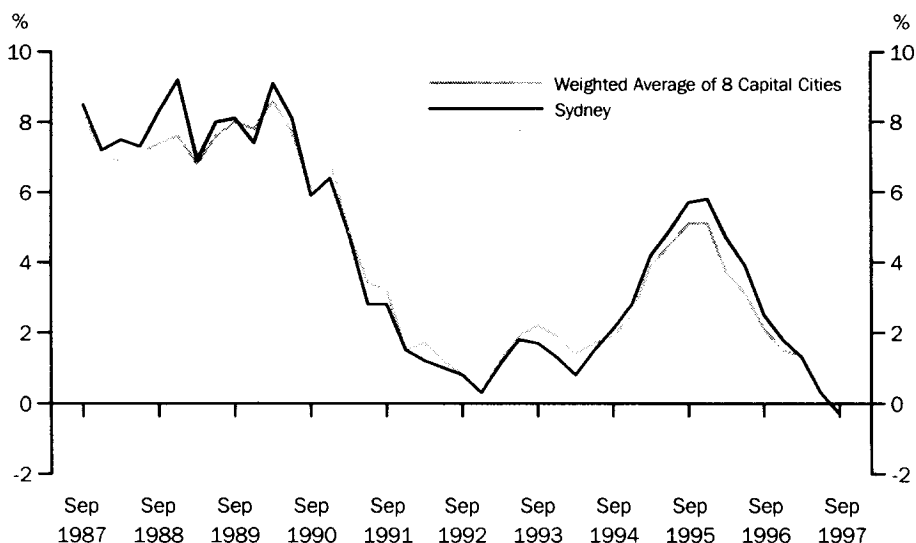
CONSUMER AND PRODUCER PRICE INDEXES, NSW

Period	Consumer Price Index, all groups	Price Index of materials used in house building, all groups	Price Index of materials used in building other than house building, all groups
	1989-90 = 100.0	1989-90 = 100.0	1989-90 = 100.0
1996			
March qtr	119.1	115.5	112.6
June qtr	119.9	116.2	112.5
September qtr	120.2	115.9	112.5
December qtr	120.4	115.8	112.6
1997			
March qtr	120.6	116.0	113.2
June qtr	120.2	117.3	113.9
September qtr	119.8	117.8	114.2

Source: Consumer Price Index (Cat. no. 6401.0), Price index of Materials Used in Building Other Than House Building, Six State Capital Cities (Cat. no. 6407.0), Price Index of Materials Used in House Building, Six State Capital Cities (Cat. no. 6408.0).

19

CONSUMER PRICE INDEX, ANNUAL RATE OF CHANGE



Source: Consumer Price Index (Cat. no. 6401.0)

Indicator	Unit	Latest period	Latest figure	New South Wales		Latest figure	Australia	
				Change from prior period	Change from same period prior year		Change from prior period	Change from same period prior year
				%	%		%	%
Lending commitments for the construction or purchase of dwellings—								
Construction of dwellings	\$m	Oct 97	216.9	-8.2	32.9	714.2	-3.1	27.2
Purchase of newly erected dwellings	\$m	Oct 97	104.8	-8.6	7.7	255.9	-0.2	20.5
Purchase of established dwellings(a)	\$m	Oct 97	1 252.2	3.5	25.8	3 755.8	2.7	13.0
Refinancing of existing dwellings	\$m	Oct 97	296.1	-8.2	-5.2	808.5	-4.6	-2.9
Lending commitments for alterations and additions	\$m	Oct 97	110.4	7.5	-1.7	264.2	10.2	-3.2
Total lending commitments to individuals for housing	\$m	Oct 97	1 870.0	-0.7	19.3	4 725.9	1.6	15.3
Total lending commitments to individuals for housing (seasonally adjusted)	\$m	Oct 97	1 863.8	0.5	18.3	4 613.4	0.9	15.2

^a Excludes refinancing.

Source: Housing Finance for Owner Occupation, Australia (Cat. no. 5609.0)

Lending commitments for the construction or purchase of dwellings

Period	Construction of dwellings \$m	Purchase of newly erected dwellings \$m	Purchase of established dwellings(a) \$m	Refinancing of existing dwellings \$m	Lending commitments for alterations and additions \$m	Total lending commitments to individuals for housing \$m	Total lending commitments to individuals for housing (seasonally adjusted) \$m
1993-94	2 151.4	838.5	10 911.6	2 337.2	1 078.2	16 238.7	n.a.
1994-95	2 162.6	819.8	9 952.4	2 381.9	1 242.0	15 316.7	n.a.
1995-96	1 894.7	897.9	10 145.3	2 929.8	1 261.8	15 867.7	n.a.
1996							
August	162.9	91.5	913.3	431.7	119.6	1 599.4	1 585.8
September	160.7	97.3	908.3	407.6	108.8	1 573.9	1 579.1
October	163.2	97.3	995.2	312.2	112.3	1 567.9	1 575.1
November	167.2	103.7	1 060.5	283.6	89.1	1 615.0	1 594.9
December	142.7	81.5	1 000.9	265.8	84.2	1 491.0	1 665.3
1997							
January	147.8	93.8	948.0	304.9	83.9	1 494.5	1 940.2
February	175.6	100.1	981.9	297.5	92.9	1 555.1	1 591.4
March	187.5	106.3	1 121.1	328.4	103.8	1 743.3	1 715.8
April	212.2	116.6	1 231.9	371.7	108.5	1 932.3	1 792.4
May	221.3	121.3	1 282.3	316.2	99.7	1 941.1	1 778.7
June	193.0	120.8	1 122.6	327.5	89.9	1 764.0	1 735.7
July	220.8	116.8	1 218.6	321.5	93.1	1 877.8	1 707.7
August	213.6	114.8	1 154.9	310.7	90.3	1 794.1	1 824.0
September	236.3	114.6	1 210.4	322.5	102.7	1 883.8	1 855.2
October	216.9	104.8	1 252.2	296.1	110.4	1 870.0	1 863.8

^a Excludes refinancing.

Source: Housing Finance for Owner Occupation, Australia (Cat. no. 5609.0)

Item	July				
	Actual 1995-96	Actual 1996-97	Estimates 1997-98	1996-97	1997-98
	\$m	\$m	\$m	\$m	\$m
RECEIPTS					
Current receipts					
Taxes, fees and fines					
Stamp duties	2 630	3 193	3 373	266	327
Payroll tax	2 876	3 161	3 338	232	282
Land tax	575	641	786	16	21
Motor vehicle tax	937	903	930	78	81
Gaming and betting	1 179	1 209	1 392	71	80
Licences	1 729	1 850	1 879	115	127
Other	943	1 000	1 214	109	104
Land transactions and royalties	246	243	238	22	23
Income from Non Budget Sector Enterprises	1 290	1 436	1 341	25	6
Commonwealth General Purpose Recurrent Grants	4 517	4 673	5 116	452	489
less—State Fiscal Contribution	—	210	216	—	20
Commonwealth Specific Purpose Recurrent Grants	2 757	2 944	2 746	240	229
Other	729	599	626	40	55
<i>Total current receipts</i>	20 408	21 642	22 763	1 666	1 804
Capital receipts					
Commonwealth General Purpose Capital Grants	—	—	—	—	—
Commonwealth Specific Purpose Capital Grants	867	854	854	1	27
Other	11	17	228	—	1
<i>Total capital receipts</i>	877	872	1 081	1	28
Total current and capital receipts	21 285	22 514	23 844	1 667	1 832
EXPENDITURE					
Current expenditure					
Departmental payments					
Services					
Health	5 116	5 381	5 585	435	485
Education (a)	4 641	4 928	5 174	337	360
Law and order (b)	1 247	1 679	1 711	118	133
Community Services	989	1 113	1 155	94	126
Other	3 944	4 057	4 171	243	287
Redundancies	17	22	38	1	1
Subsidies to Non Budget agencies					
Services	726	1 073	867	43	84
Redundancies	66	33	63	5	5
Interest payments	1 683	1 399	1 527	107	179
Superannuation	1 077	1 402	1 451	94	106
Treasurer's advance (c)	—	—	120	—	—
less—User charges	1 286	1 349	1 347	108	135
<i>Total current expenditure</i>	18 220	19 739	20 516	1 370	1 630
Capital expenditure					
Capital works	1 940	2 315	2 666	110	143
Capital grants	1 483	1 109	1 240	73	104
Advances made	65	69	14	25	1
less—Advances repaid	1 877	657	215	4	2
less—Asset sales	160	247	322	15	95
<i>Total capital expenditure</i>	1 449	2 589	3 383	190	152
Total current and capital expenditure	19 669	22 328	23 899	1 560	1 782
SURPLUS OR DEFICIT (-)					
Current account	2 188	1 903	2 246	296	174
Capital account	-572	-1 717	-2 302	-189	-124
<i>Total result surplus/deficit</i>	1 617	186	-56	107	50

^a Includes Department of Training and Education Co-ordination, Department of School Education, Office of the Board of Studies and TAFE.

^b Includes Attorney Generals Department, Department of Corrective Services and Police Services.

^c Expenditure from the Treasurer's Advance is included in the relevant current payments figures.

Source: Financial Statement released by NSW Treasury. Figures may differ from data published in annual ABS publications.

23

ACTUAL PRIVATE NEW FIXED CAPITAL EXPENDITURE, NSW AND AUSTRALIA — TREND ESTIMATES

Indicator	Unit	Latest period	Latest figure	New South Wales		Latest figure	Australia	
				Change from prior period	Change from same period prior year		Change from prior period	Change from same period prior year
				%	%		%	%
Type of asset—								
New buildings and structures	\$m	Sept qtr	985	-6.8	-7.1	3 178	-8.5	-12.2
Equipment, plant and machinery	\$m	Sept qtr	2 440	3.1	1.8	7 953	3.3	8.7
Total	\$m	Sept qtr	3 425	0.0	-0.9	11 132	-0.4	1.8

Source: State Estimates of Private New Capital Expenditure (Cat. no. 5646.0)

24

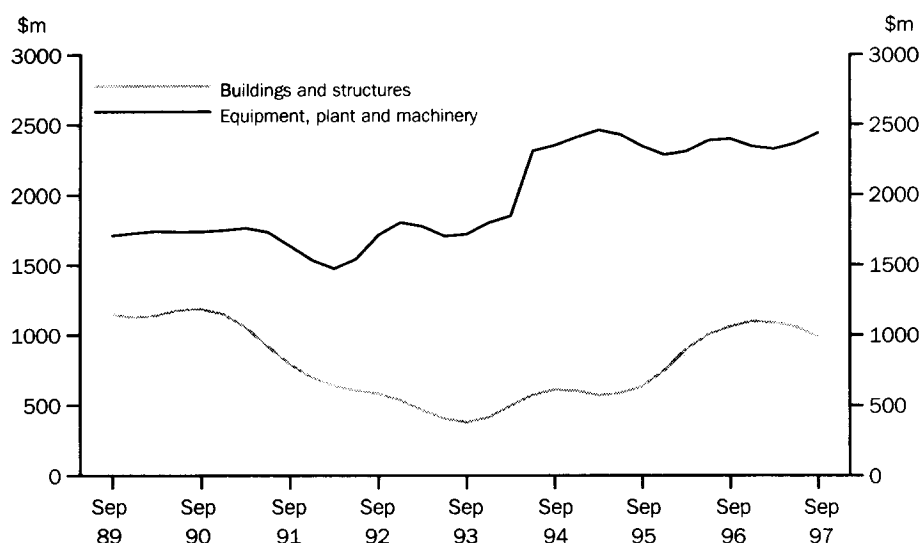
ACTUAL PRIVATE NEW FIXED CAPITAL EXPENDITURE, NSW — TREND ESTIMATES

Period	Type of asset		
	New buildings and structures	Equipment, plant and machinery	Total
	\$m	\$m	\$m
1996			
June qtr	1 002	2 386	3 388
September qtr	1 060	2 397	3 457
December qtr	1 095	2 344	3 438
1997			
March qtr	1 087	2 326	3 412
June qtr	1 057	2 367	3 424
September qtr	985	2 440	3 425

Source: State Estimates of New Capital Expenditure (Cat. no. 5646.0)

25

ACTUAL PRIVATE NEW FIXED CAPITAL EXPENDITURE — TREND ESTIMATES, NSW



Source: State Estimates of New Capital Expenditure (5646.0)

Indicator	Unit	Latest period	Latest figure	New South Wales		Latest figure	Australia	
				Change from prior period	Change from same period prior year		Change from prior period	Change from same period prior year
				%	%		%	%
Overseas imports into NSW	\$m	Oct 97	3 393	5	12	7 875	8	8
Total overseas exports(b)	\$m	Oct 97	1 666	1	19	7 222	6	14
Exports of—								
Meat and meat preparations	\$m	Oct 97	75	1	17	336	15	35
Cereals and cereal preparations	\$m	Oct 97	94	-40	49	383	-4	1
Wool and other animal hair	\$m	Oct 97	118	17	43	372	27	18
Coke, coal and briquettes	\$m	Oct 97	301	-14	3	741	-8	9
Iron and steel	\$m	Oct 97	123	109	86	176	48	56
Aluminium	\$m	Oct 97	96	34	29	234	-2	45
Office machines and parts	\$m	Oct 97	45	-7	-5	71	-14	-1

^a Figures shown are Free On Board (FOB) values.

^b Excludes re-exported goods. State of origin is defined as the State in which the final stage of production or manufacture occurs.

Source: International Trade, Australia: FASTTRACCS Service (Cat. no. 5460.0).

Period	Overseas exports of selected commodities(b)								
	Overseas imports into NSW	Total overseas exports(b)	Meat and meat preparations	Cereals and cereal preparations	Wool and other animal hair	Coke, coal and briquettes	Iron and steel	Aluminium	Office machines and parts
	\$m	\$m	\$m	\$m	\$m	\$m	\$m	\$m	\$m
1994-95	33 280	15 201	885	458	1 035	2 801	913	1 018	829
1995-96	34 891	16 684	794	822	720	3 338	1 037	1 111	638
1996-97	34 192	17 724	784	1 540	859	3 426	968	993	534
1996									
August	3 002	1 383	51	82	47	281	77	81	46
September	2 813	1 532	61	135	68	285	101	85	51
October	3 019	1 406	64	63	82	292	66	75	47
November	2 879	1 474	77	68	87	289	77	74	56
December	2 798	1 494	63	125	86	279	65	77	55
1997									
January	2 631	1 326	54	120	64	343	87	81	35
February	2 549	1 383	65	163	59	277	81	86	41
March	2 649	1 527	70	149	100	261	80	95	50
April	2 939	1 445	76	137	62	286	92	88	31
May	2 789	1 717	75	197	73	289	112	99	40
June	3 182	1 551	68	204	61	270	57	73	40
July	3 222	1 745	74	145	104	333	65	97	45
August	3 005	1 758	71	185	79	317	92	115	44
September	3 219	1 656	74	157	101	351	59	72	48
October	3 393	1 666	75	94	118	301	123	96	45

^a Figures shown are Free On Board (FOB) values.

^b Excludes re-exported goods. State of origin is defined as the State in which the final stage of production or manufacture occurs.

Source: International Trade, Australia: FASTTRACCS Service (Cat. no. 5460.0).

FOR MORE INFORMATION

The ABS publishes a wide range of statistics and other information on Australia's economic and social conditions. Details of what is available in various publications and other products can be found in the ABS Catalogue of Publications and Products available from all ABS Offices.

ABS Products and Services

Many standard products are available from ABS bookshops located in each State and Territory. In addition to these products, information tailored to the needs of clients can be obtained on a wide range of media by contacting your nearest ABS Office. The ABS also provides a Subscription Service for standard products and some tailored information services.

National Dial-a-Statistic Line

0055 86 400

Steadycom P/L: premium rate 25c/20 secs.

This number gives 24-hour access, 365 days a year, for a range of important economic statistics including the CPI.

Internet

<http://www.abs.gov.au>

A wide range of ABS information is available via the Internet, with basic statistics available for each State, Territory and Australia. We also have Key National Indicators, ABS product release details and other information of general interest.

Sales and Inquiries

client.services@abs.gov.au

National Mail Order Service	(02) 6252 5249
Subscription Service	1800 02 0608

Information Inquiries

SYDNEY	(02) 9268 4611
CANBERRA	(02) 6252 6627
MELBOURNE	(03) 9615 7755
BRISBANE	(07) 3222 6351
PERTH	(09) 360 5140
ADELAIDE	(08) 8237 7100
HOBART	(03) 6222 5800
DARWIN	(08) 8943 2111

Bookshop Sales

(02) 9268 4620
(02) 6252 0326
(03) 9615 7755
(07) 3222 6350
(09) 360 5307
(08) 8237 7582
(03) 6222 5800
(08) 8943 2111



Client Services, ABS, PO Box 10, Belconnen ACT 2616



2130710001986

ISSN 1031-8534

RRP \$16.00

© Commonwealth of Australia